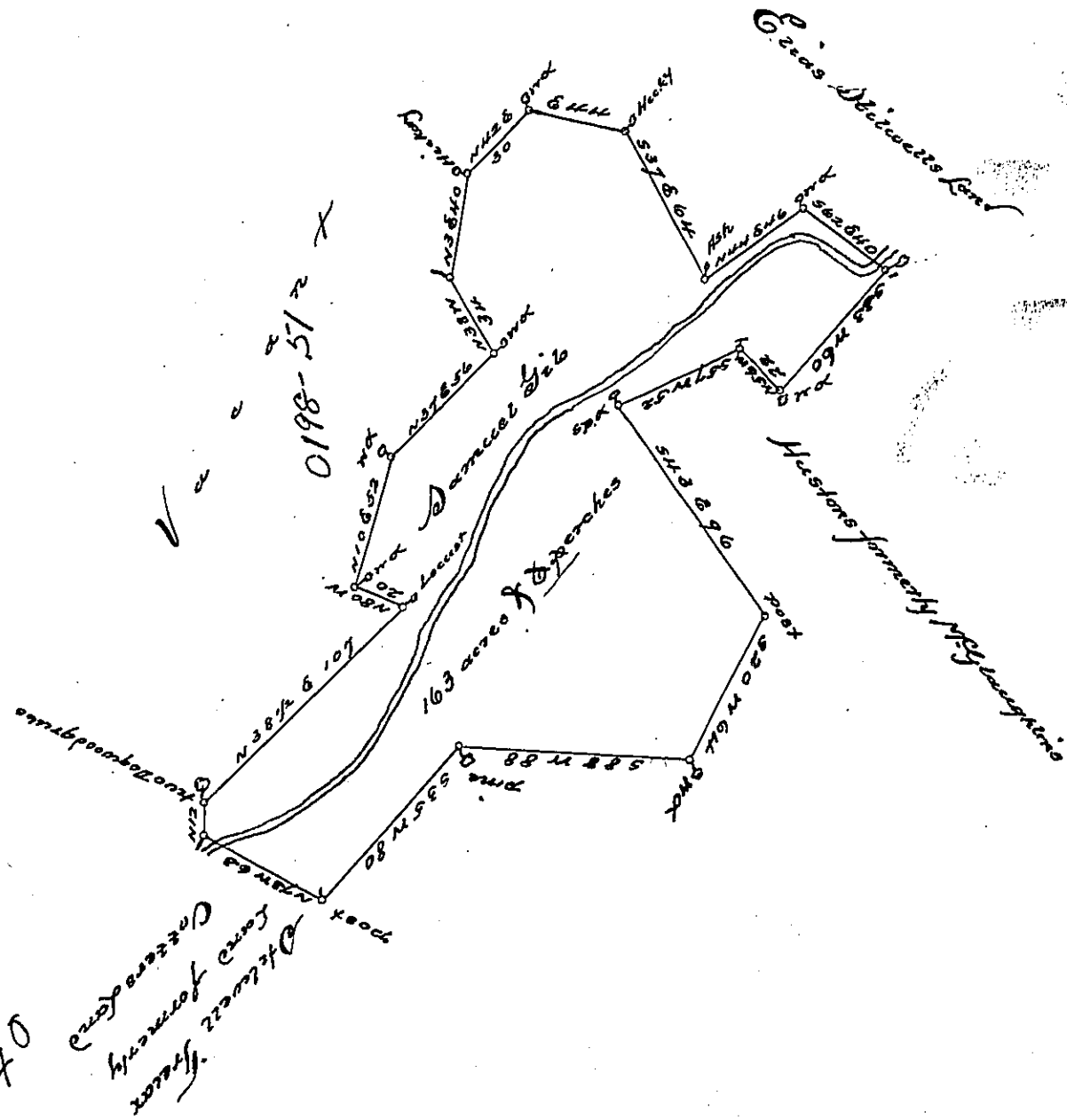


P-3-328



34-140
 A Tract of a Tract of Land Situate on the Great Cove Creek in
 the Township Bedford County Containing one hundred and sixty three acres and
 six perches & the usual allowance of six per cent for Roads &c. Surveyed the 18th
 day of March 1785. In pursuance of an order granted to Daniel Gilb. dated
 the 1st of December 1766 N^o 2024

George Woods A.S.

To John Lukens Esqr.
S. G.

IN TESTIMONY that the above is a copy of the original remaining on file in
 the Department of Internal Affairs of Pennsylvania, made
 conformably to an Act of Assembly approved the 16th day of
 February, 1833, I have hereunto set my Hand and caused
 the Seal of said Department to be affixed at Harrisburg,
 this third day of May 1898

James W. Latta
 Secretary of Internal Affairs.